

# Diamante

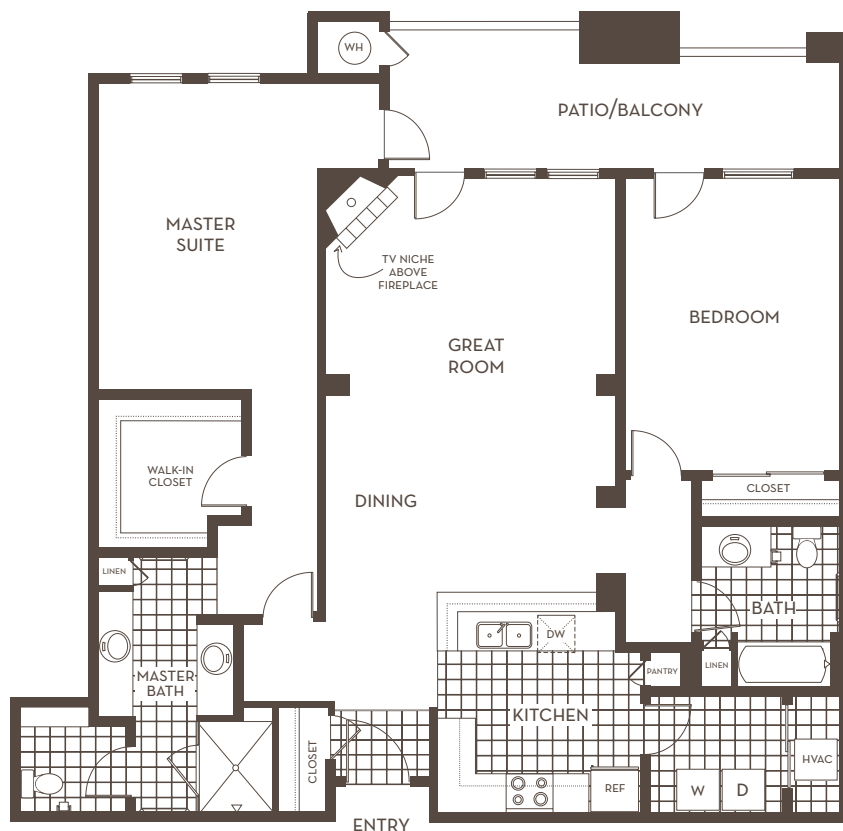
2 BEDROOM / 2 BATH

1441 SF

A traditional yet dynamic floor plan, the Diamante features a two-bedroom split floor plan with a great room literally designed as the center of activity. A large patio/balcony with access from three rooms also maximizes outdoor living.

## UNIQUE FEATURES

- Oversized patio/balcony with access from great room, master suite and second bedroom
- Open style floor plan in living areas
- Dual sinks in master bath
- Split floor plan to maximize privacy
- Natural gas fireplace with TV niche
- Separate laundry room



Square footage is approximate, not including patios and balconies. It is possible that base price units will not be available in each selling phase. Additional location premiums may apply to some units. There may be deviations in the residence from sellers models, such as windows, doors, ceiling heights, square footage, and niches. Floor plan is for illustrative purposes only. Variations may exist. Seller reserves the right to change prices & specifications without notice or obligation. Sales are conditional upon buyers receipt and acceptance of the Arizona Department of Real Estate Subdivision Report. Starcon ROC # 209648